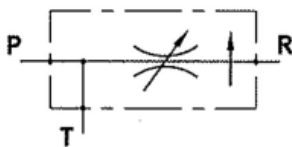
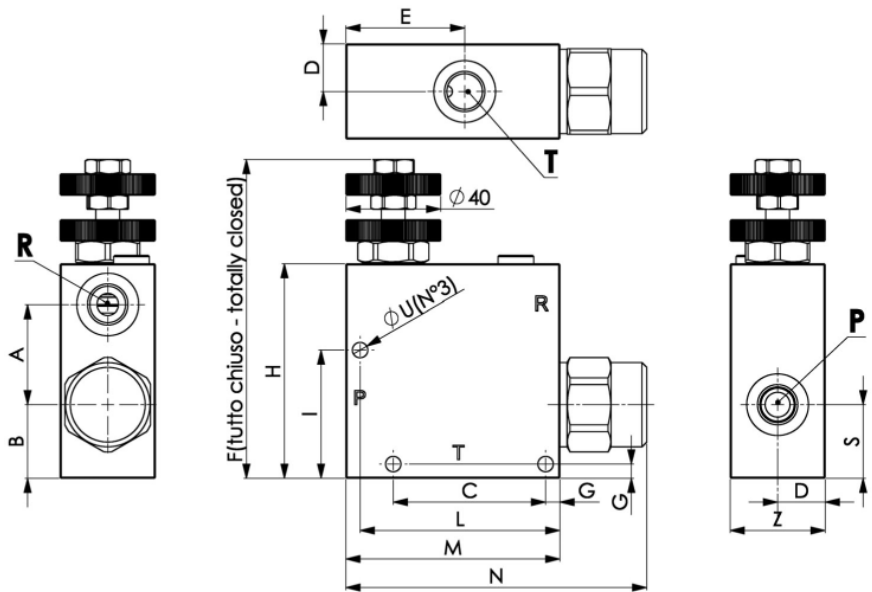

 SCHEMA IDRAULICO  
 HYDRAULIC SCHEME

**Ingombro / Dimensions**

**SPECIFICHE TECNICHE**

Materiali: corpo in alluminio / corpo in acciaio \*.  
 Componenti interni in acciaio trattato termicamente.  
 Portata max.:  
 - 50 l/min con 30 l/min su ramo regolato "R" per 3/8"  
 - 90 l/min con 50 l/min su ramo regolato "R" per 1/2"  
 - 150 l/min con 90 l/min su ramo regolato "R" per 3/4"  
 Pressione max.: 250 bar - 350bar \*  
 Pressione di standby: 5 bar  
 Peso: 2Kg alluminio - 5Kg acciaio \*

**TECHNICAL SPECIFICATIONS**

Materials: aluminium body - steel body \*.  
 Internal parts are in hardened steel.  
 Rated flow:  
 - 50 l/min with 30 l/min in "R" port for 3/8"  
 - 90 l/min with 50 l/min in "R" port for 1/2"  
 - 150 l/min with 90 l/min in "R" port for 3/4"  
 Max. pressure: 250 bar - 350bar \*  
 Standby pressure: 5 bar  
 Weight: 2Kg aluminium - 5Kg steel \*

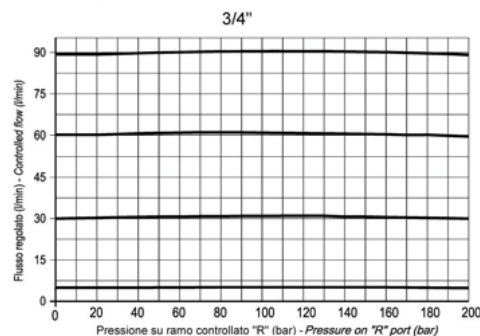
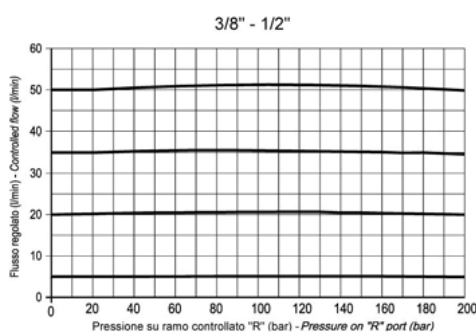
**Dati tecnici / Technical features**

Regolatore di flusso 3 vie compensato - eccedenza a scarico - montaggio in linea <i>Compensated 3-way flow regulator - exceeding flow to tank - line mounting</i>				Quote <i>Dimensions</i>																	
Tipo <i>Type</i>	Codice <i>Code</i>	Portata max. <i>Max. flow l/min.</i>	Pressione max. <i>Max. pressure bar</i>	A	B	C	D	E	F	G	H	I	L	M	N	P	R	S	T	U	Z
				mm	mm	mm	mm	mm	mm	mm	mm	mm	mm	mm	mm	mm	mm	mm	mm	mm	mm
3/8"	12590100032	50	corpo alluminio aluminium body 250	42	31	64	20	50	133.5	6	90	54	78	90	126.5	G3/8	G3/8	31	G3/8	6.5	40
1/2"	12590100292	90														G1/2	G1/2		G1/2		
3/4"	12590100130	150	* corpo acciaio steel body 350	50	35	88	25	66	155.5	8	110	63.5	102	110	144.7	G3/4	G3/4	35	G3/4	8.5	50
		12590100283														150	G3/4		G3/4		

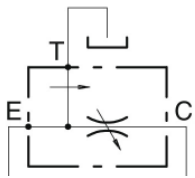
\* corpo in acciaio / steel body

**DIAGRAMMA COMPENSAZIONE - COMPENSATION CURVES**

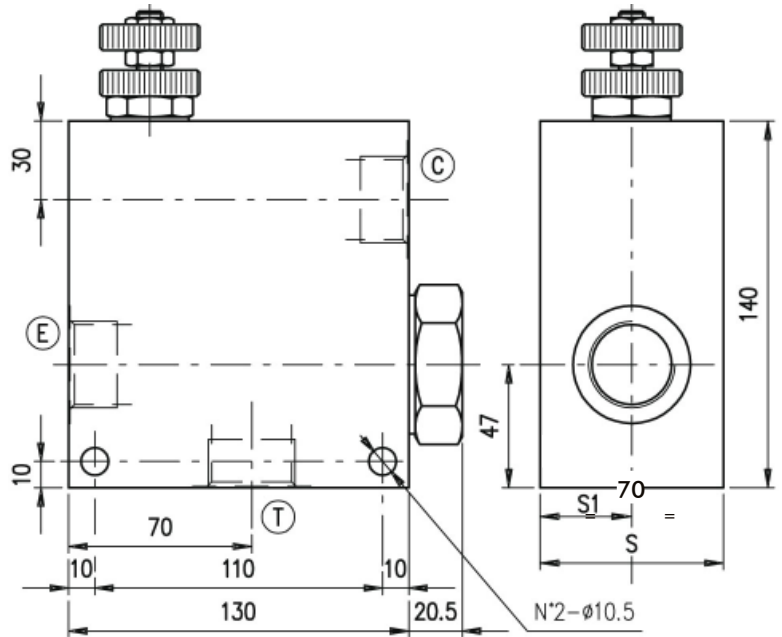
 Viscosità olio 24 mm<sup>2</sup>/sec. (3,5 °E)  
 Temperatura 50 °C

 Oil viscosity 24 mm<sup>2</sup>/sec. (3,5 °E)  
 Temperature 50 °C


**Ingombro / Dimensions**



SCHEMA IDRAULICO  
HYDRAULIC SCHEME

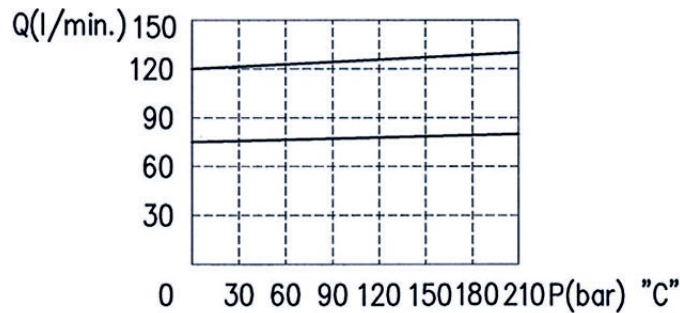


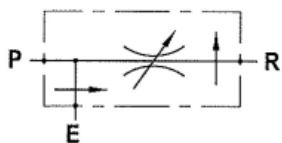
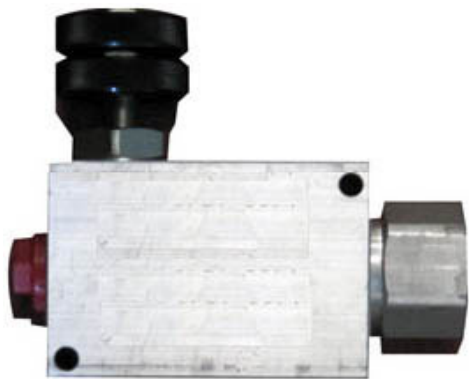
E	T	C
G 1"	G 1"	G 1"

**Dati tecnici / Technical features**

<b>Valvola regolatrice di portata a 3 vie compensata - eccedente a scarico -</b> Compensated 3-way flow regulator - exceeding flow to tank -				
<b>Tipo</b> Type gas	<b>Codice</b> Code	<b>Portata</b> Flow l/min.	<b>Pressione</b> Pressure bar	<b>Filettatura entrate</b> IN thread
1"	12590100096	E=240 C=150	210	1"

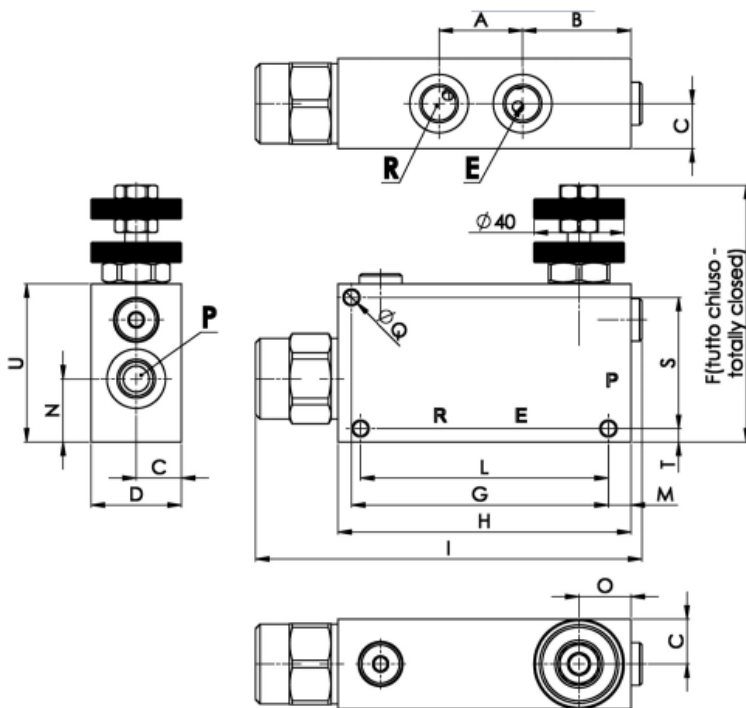
Diagramma compensazione E → C  
Compensation curves





SCHEMA IDRAULICO  
HYDRAULIC SCHEME

**Ingombro / Dimensions**



**SPECIFICHE TECNICHE**

Materiali: corpo in alluminio.  
Componenti interni in acciaio trattato termicamente.  
Portata max.:  
- 90 l/min con 50 l/min su ramo regolato "R" per 1/2  
Pressione max.: 250 bar  
Pressione di standby: 5 bar

**TECHNICAL SPECIFICATIONS**

Materials: aluminium body.  
Internal parts are in hardened steel.  
Rated flow:  
- 90 l/min with 50 l/min in "R" port for 1/2"  
Max. pressure: 250 bar  
Standby pressure: about 5 bar

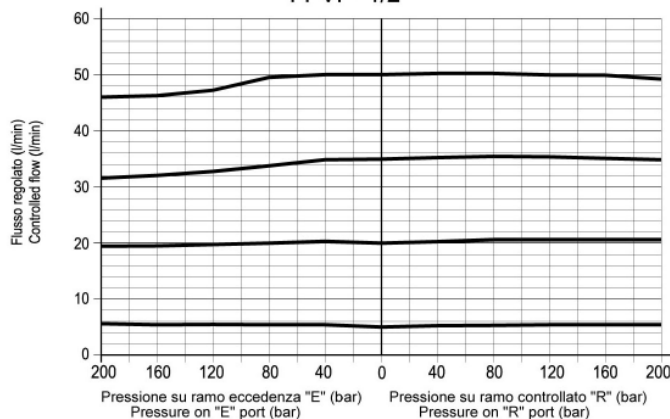
**Dati tecnici / Technical features**

Regolatore di flusso 3 vie compensato - eccedenza a scarico - montaggio in linea <i>Compensated 3-way flow regulator - exceeding flow to tank - line mounting</i>				Quote <i>Dimensions</i>																		
Tipo <i>Type</i>	Codice <i>Code</i>	Portata max. <i>Max. flow</i> l/min.	Pressione max. <i>Max. pressure</i> bar	A	B	C	D	E	F	G	H	I	L	M	N	O	P	Q	R	S	T	U
1/2"	12590100050	90	250	37	48	20	40	1/2"	113.7	114	130	171.3	110	10	28	23	1/2"	6.5	1/2"	58	6	70

**DIAGRAMMA COMPENSAZIONE - COMPENSATION CURVES**

Viscosità olio 24 mm<sup>2</sup>/sec. (3,5 °E)      Oil viscosity 24 mm<sup>2</sup>/sec. (3,5 °E)  
Temperatura 50 °C      Temperature 50 °C

FPVP 1/2"



24/04/2012

99712590110 Rev: AA