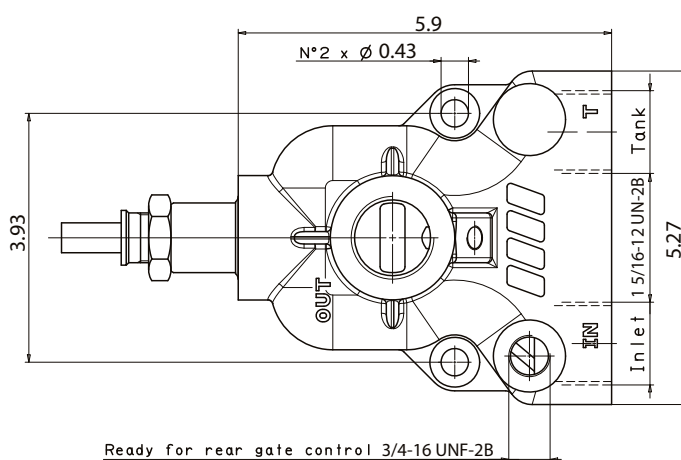
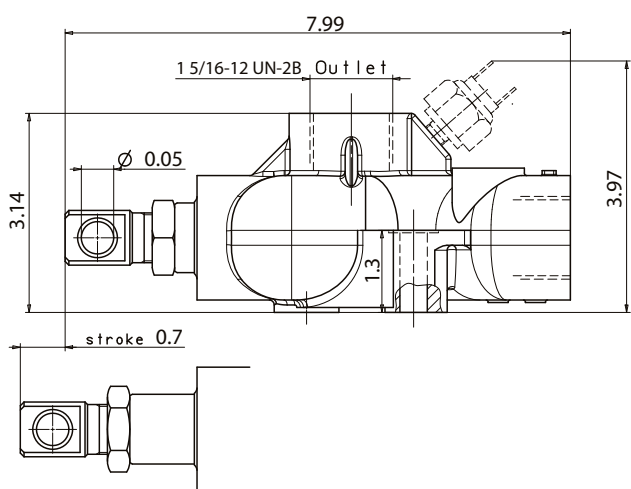


End of stroke valve especially designed for trailers and semi-trailers either with 1 hose or 2 hoses configurations. The special hydraulic scheme allows the valve to be used for either open or closed center circuits. Furthermore it prevents the cylinder from any pressure peaks.

The innovative and compact design makes the fitting easier and cost effective.

- Mechanical runstop valve.
- Flow up to 52,8 gpm.
- Cast iron body resistant to pressure up to 5801 psi.
- Body c/w anti-corrosion coating and Nickel spool.
- Pressure switch option.
- High-resistance anti-shock spring.

Dimensions

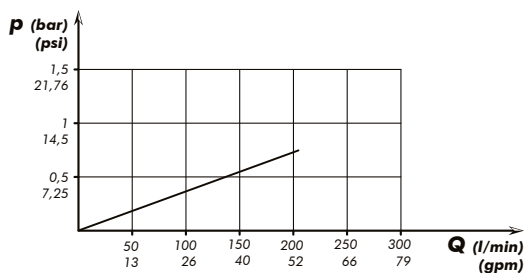


inch dimensions

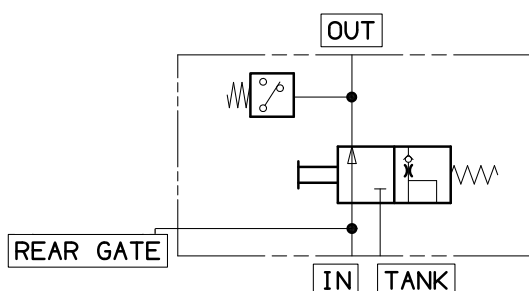
Technical features

Tipping valve type	Order code	Max. pressure	Flow	Weight
RUNSTOP 200	12193500227	5076 psi	52,8 gpm	10,6 lb

Pressure drops



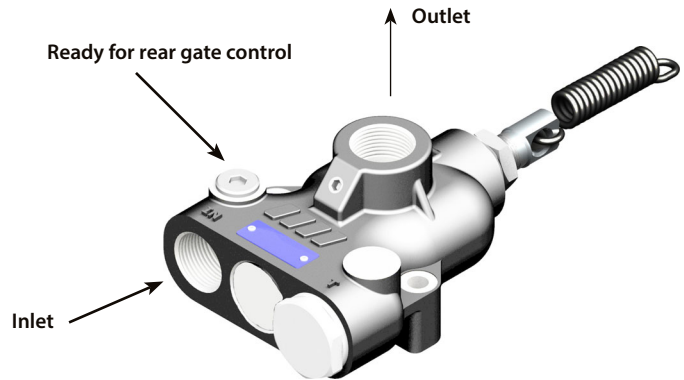
Functional diagram



Seal kit: 1219004000

1 hose configuration

By this configuration the RUNSTOP valve interrupts the oil flow to the cylinder and the delivery is diverted to the outlet through the safety valve of the main tipping valve. In this case we recommend to use tipping valves c/w piloted safety valves like our modular pilot valve series.



2 hoses configuration

By this configuration the RUNSTOP valve interrupts the oil flow to the cylinder and the delivery is diverted to the outlet through the second pipe connected to the oil tank.

