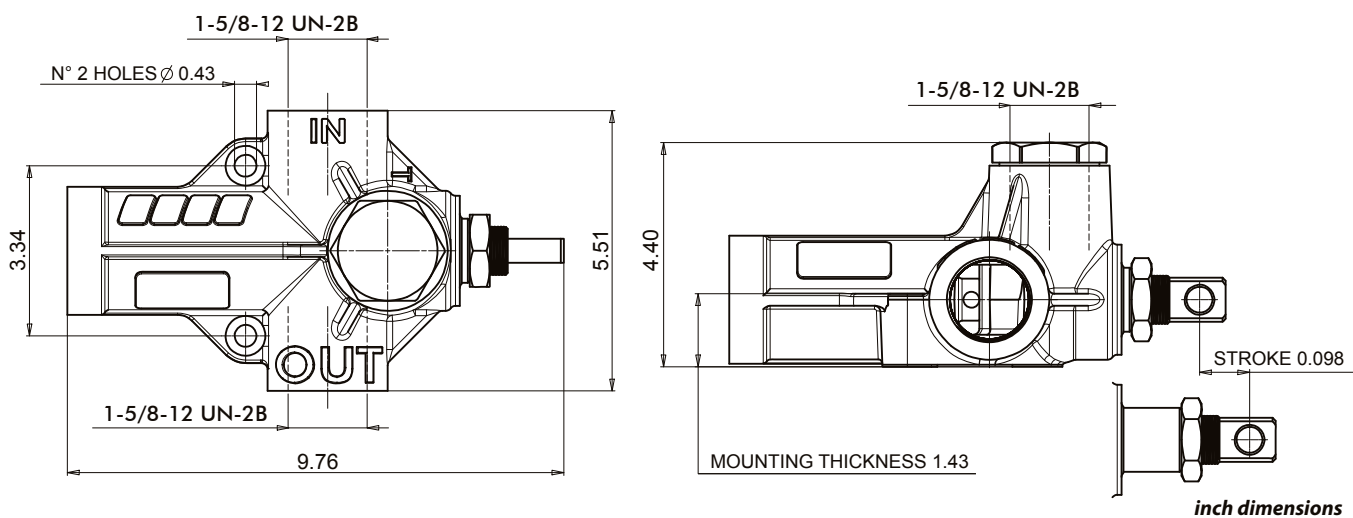


End of stroke valve especially designed for semi-trailers either with 1 hose or 2 hoses applications.

The special hydraulic scheme allows the valve to be used as either open center or closed center configurations. Furthermore it prevents the cylinder from any pressure peaks.

- Flow up to 66 gpm.
- Cast iron body for pressures up to 5801 psi.
- Body c/w anti-corrosion coating and Nickel spool.
- High-resistance anti-shock spring.

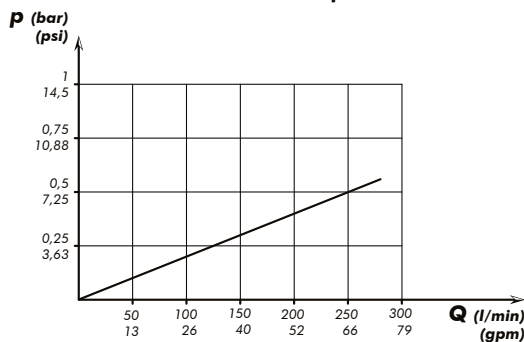
Dimensions



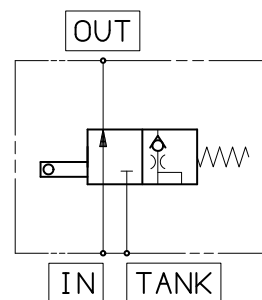
Technical features

Tipping valve type	Order code	Pressure		Flow	Weight
		In service	Max. peak		
RUNSTOP 250	12193500254	2610 psi	3626 psi	66 gpm	12 lb

Pressure drops



Functional diagram

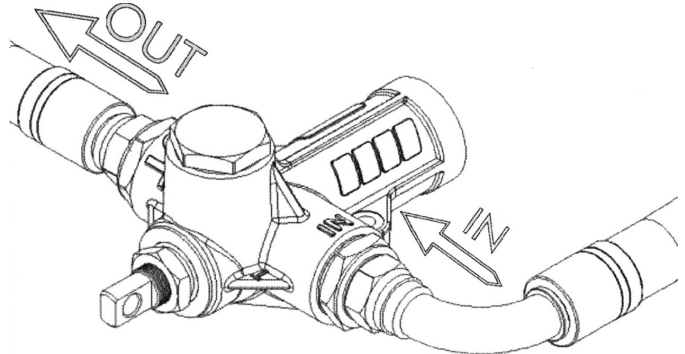


Seal kit: 1219004055

1 hose configuration

By this configuration the RUNSTOP valve interrupts the oil flow to the cylinder and the delivery is diverted to the outlet through the safety valve of the tipping valve. In this case we recommend to use tipping valves c/w piloted safety valves like our.

MODULAR-250 CARTRIDGE
P/N 12100800283



2 hoses configuration

By this configuration the RUNSTOP valve interrupts the oil flow to the cylinder and the delivery is diverted to the outlet through the second pipe connected to the oil tank.

