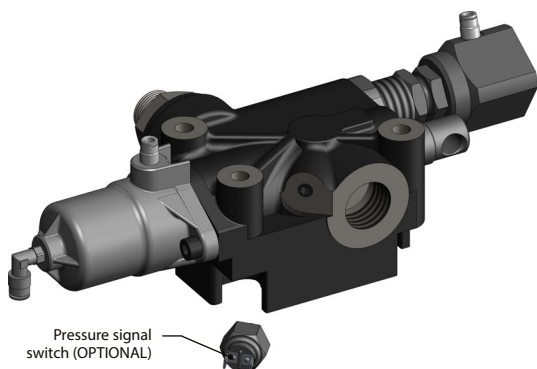


Proportional pneumatic 2 pressures valve

SAE 16 thread

MODULAR 250 2PP

121922

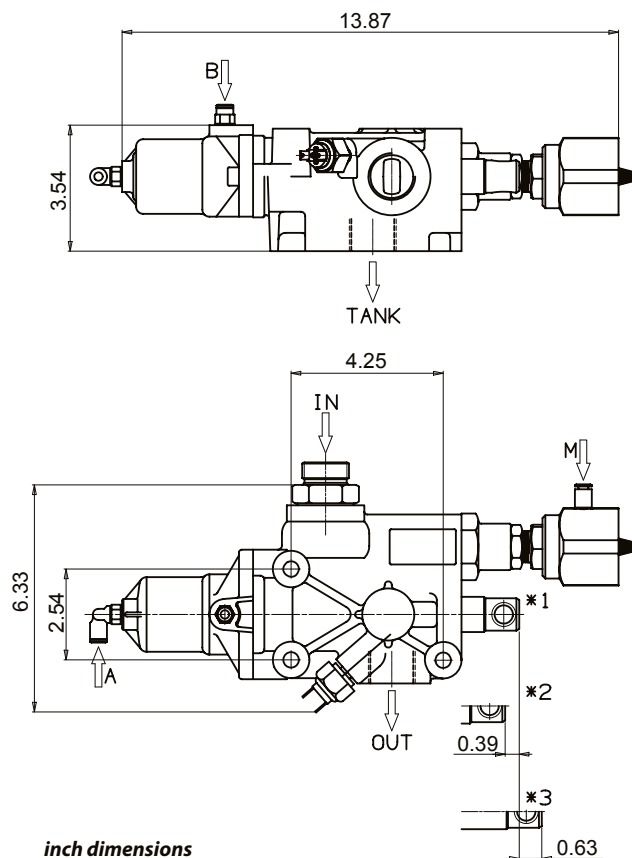


Proportional pneumatic tipping valve suitable for large oil flow applications especially designed for heavy-duty tipper bodies/semi-trailers with two different working pressures which can be selected pneumatically. Operated by proportional cab control.

Open center hydraulic scheme according to CE standards.

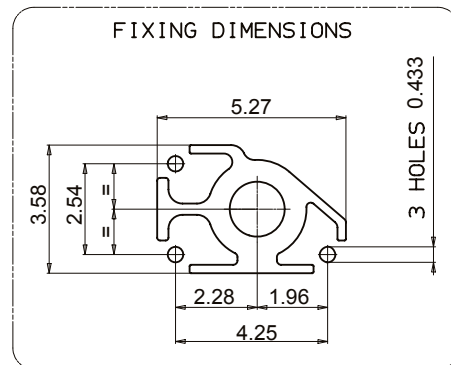
- Built-in check valve and dual pressure adjustable relief valve (pilot type).
- Nodular cast-iron body for pressure up to 5801 psi.
- Either Chassis or tank mounting options.
- Mechanical Direct End-of-stroke.
- Predisposition for pressure signal switch.
- Galvanized body and nickel spool.
- Guaranteed for oil temperature range -25÷80 °C, viscosity range 12÷100 cSt and oil filtering 25 µm.

Dimensions



inch dimensions

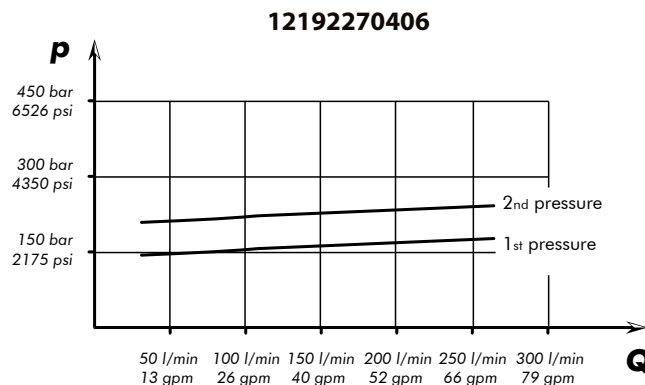
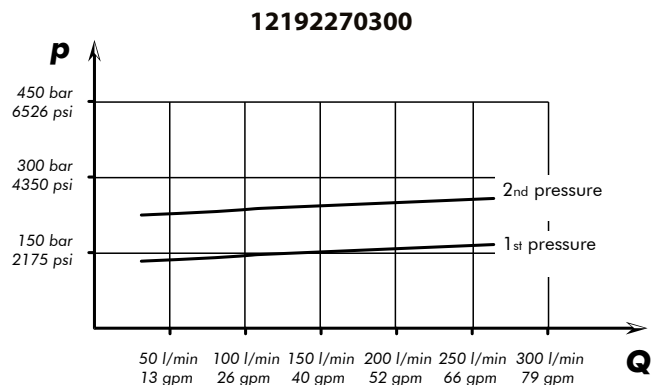
- A= PROPORTIONAL LOWERING *1= REST POSITION
B= TIPPING *2= TIPPING
M= MEDIUM PRESSURE *3= LOWERING



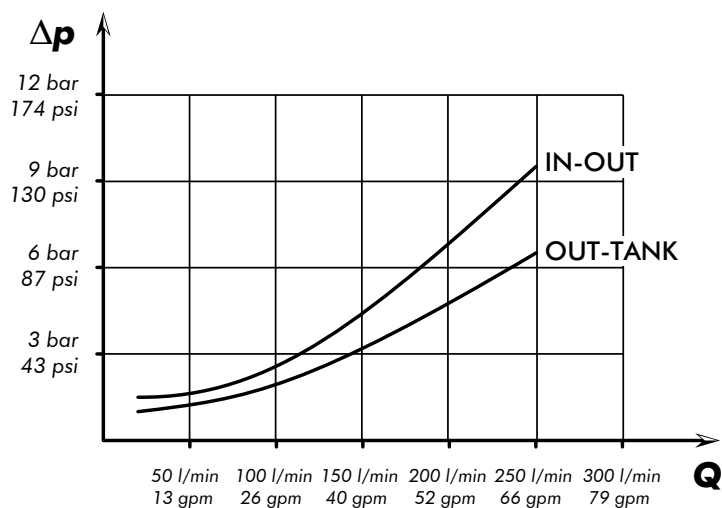
Technical features

Tipping valve type	Order code	IN	TANK	OUT	Pressure values		Flow	Weight
		ISO 228	ISO 228	ISO 228	1st	2nd		
MODULAR 250 CE	12192270300	1 5/16-12 UN-2A	1 5/16-12 UN-2B	2030 psi	3335 psi	66 gpm	15 lb	
	Standard setting of the 1 st pressure is at - 21 gpm.							
	2 nd pressure value is set consequently.							
	2200 psi			3000 psi				
12192270406				Standard setting of the 1 st pressure is at - 25 gpm.				
				2 nd pressure value is set consequently.				

p-Q operating curve for pressure relief valves

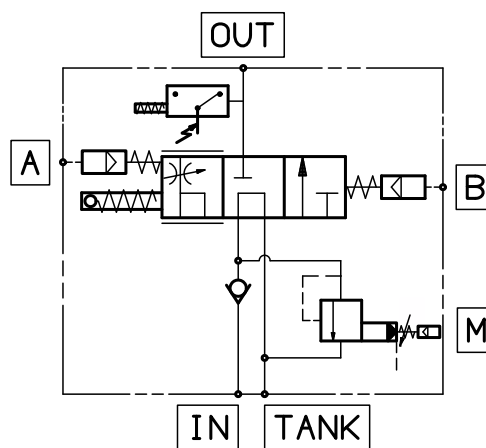


Tipping valve pressure drops



The graph refers to oil type ISO VG 46 a 50°

Functional diagram



Seal kit: 12190003305