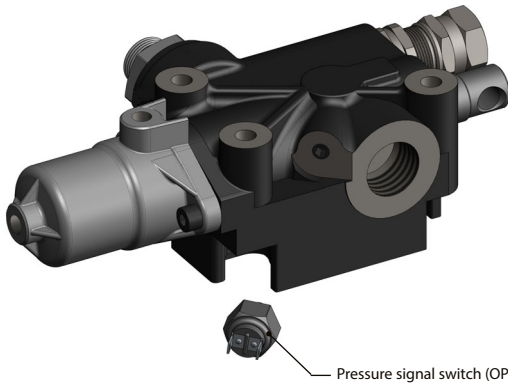


Proportional pneumatic tipping valve

SAE 16 - NPT thread

MODULAR 250 "DIRECT"

12192200517

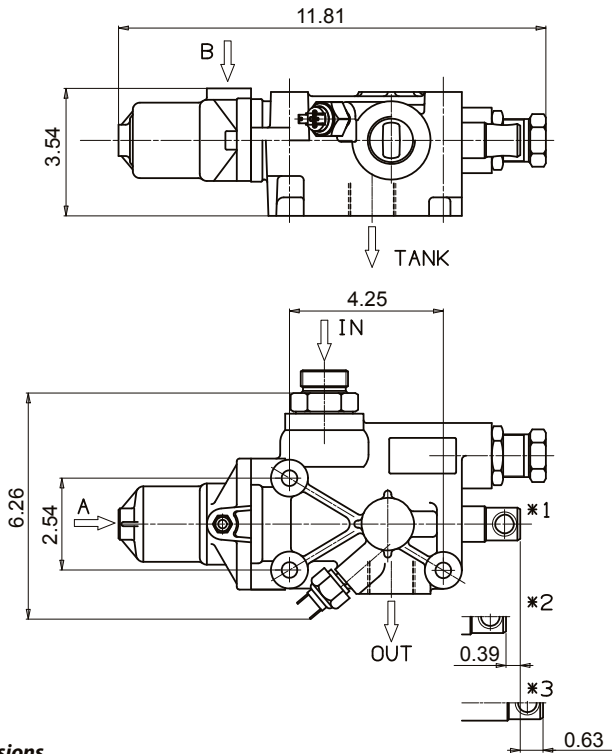


Pressure signal switch (OPTIONAL)

Proportional pneumatic tipping valve suitable for large oil flow applications especially designed for heavy-duty tipper bodies, off-road trucks and semi-trailers. Operated by proportional cab control. Open center hydraulic scheme according to CE standards.

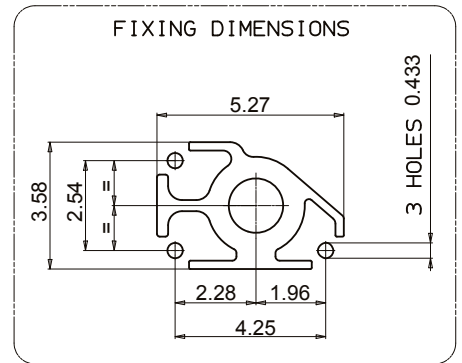
- Built-in check and adjustable relief valves (direct type).
- Nodular cast-iron body for pressure up to 5801 psi.
- Either Chassis or tank mounting options.
- Mechanical Direct End-of-stroke.
- Predisposition for pressure signal switch.
- Galvanized body and nickel spool.
- Guaranteed for oil temperature range -15+110 °C, viscosity range 12÷100 cSt and oil filtering 25 µm.

Dimensions



A = 1/8 NPT Proportional lowering
B = 1/8 NPT Tipping

- * 1 = Rest position
- * 2 = Tipping
- * 3 = Lowering

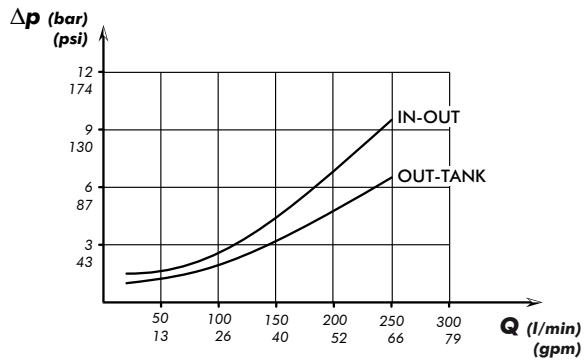


inch dimensions

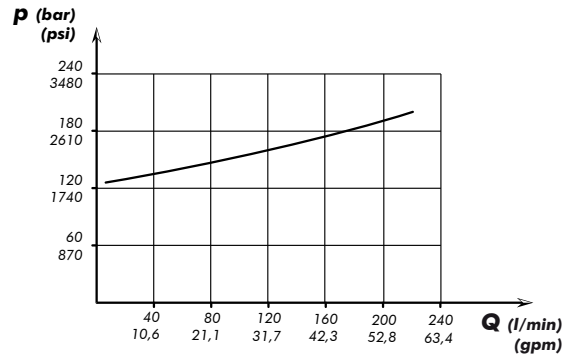
Technical features

Tipping valve type	Order code	IN	TANK	OUT	Pressure values		Flow	Weight
		ISO 228	ISO 228	ISO 228	Standard	Max.		
MODULAR 250 CE	12192200517	1 5/16-12 UN-2A	1 5/16-12 UN-2B		2320 psi	4061 psi	66 gpm	15 lb

Tipping valve pressure drops

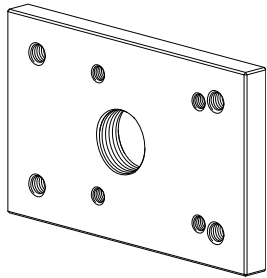


p-Q operating curve for pressure relief valves

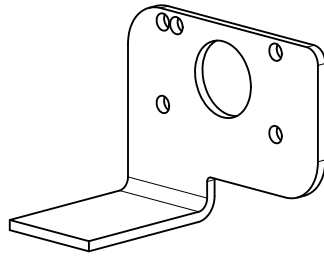


The graph refers to oil type ISO VG 46 a 40°

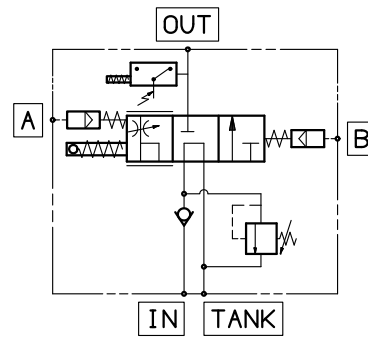
Mounting plate for tank
12199100194



Mounting plate for chassis
12199100069



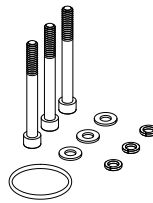
Functional diagram



OPTIONAL
Safety sealing
12190100110



Must be ordered separately



Mounting kit p/n: 12199400502	
Q.	Description
3	Screw M10 TCE L=100
3	Washer M10
3	Spring washet M10
1	O-ring

Seal kit: 12190002002