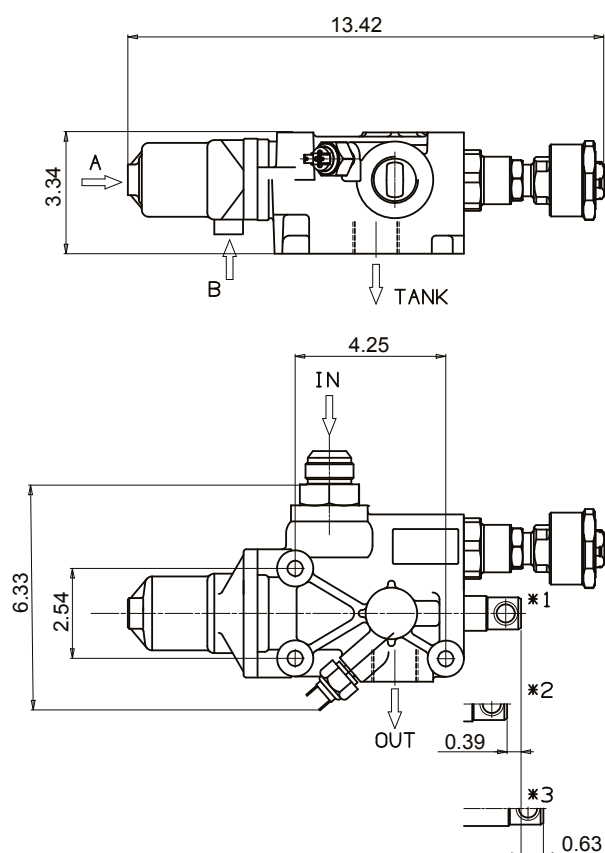


Proportional pneumatic tipping valve suitable for large oil flow applications especially designed for heavy-duty tipper bodies/semi-trailers with two different working pressures which can be selected pneumatically. Operated by proportional cab control.

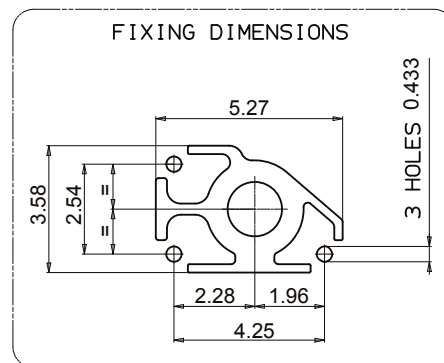
Open center hydraulic scheme according to CE standards.

- Built-in check valve and dual pressure adjustable relief valve (pilot type).
- Nodular cast-iron body for pressure up to 5801 psi.
- Either Chassis or tank mounting options.
- Mechanical Direct End-of-stroke.
- Predisposition for pressure signal switch.
- Galvanized body and nickel spool.
- Guaranteed for oil temperature range -25÷80 °C, viscosity range 12÷100 cSt and oil filtering 25 µm.

Dimensions



- A = PROPORTIONAL LOWERING *1 = REST POSITION
B = TIPPING *2 = TIPPING
M = MEDIUM PRESSURE *3 = LOWERING

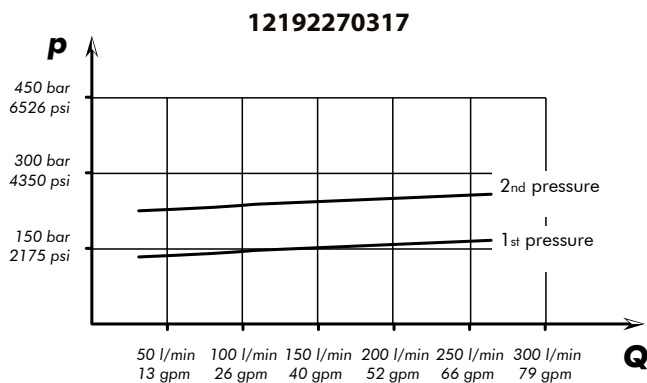


inch dimensions

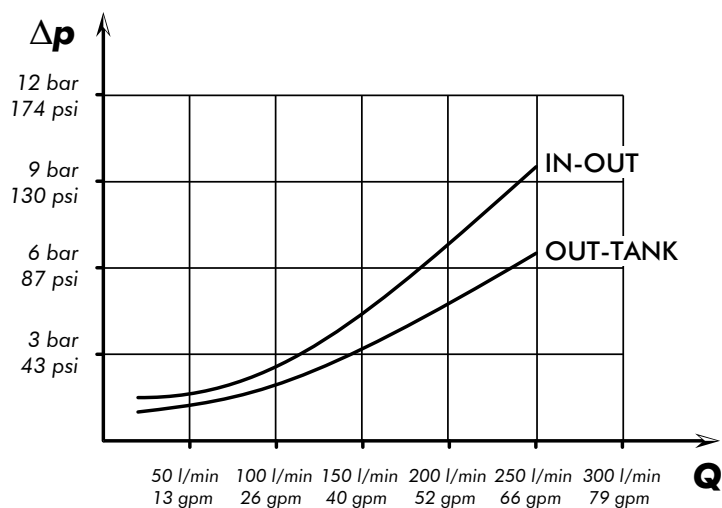
Technical features

Tipping valve type	Order code	IN	TANK	OUT	A - B - M	Pressure values		Flow	Weight
		ISO 228	ISO 228	ISO 228		1st	2nd		
MODULAR 250 CE	12192270317	1 5/16-12 UN-2A	1 5/16-12 UN-2B		1/8 NPT	2030 psi	3335 psi	66gpm	15 lb
						Standard setting of the 1 st pressure is at -21 gpm. 2 nd pressure value is set consequently.			

p-Q operating curve for pressure relief valves

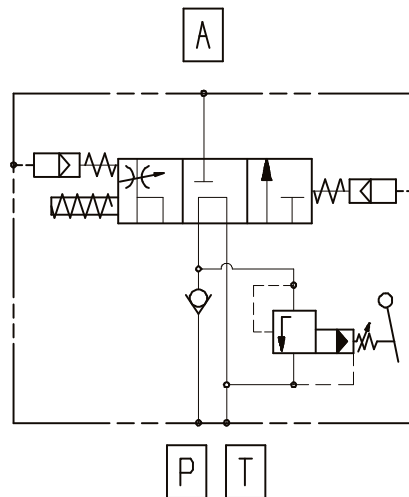


Tipping valve pressure drops



The graph refers to oil type ISO VG 46 a 50°

Functional diagram



Seal kit: 12190003305