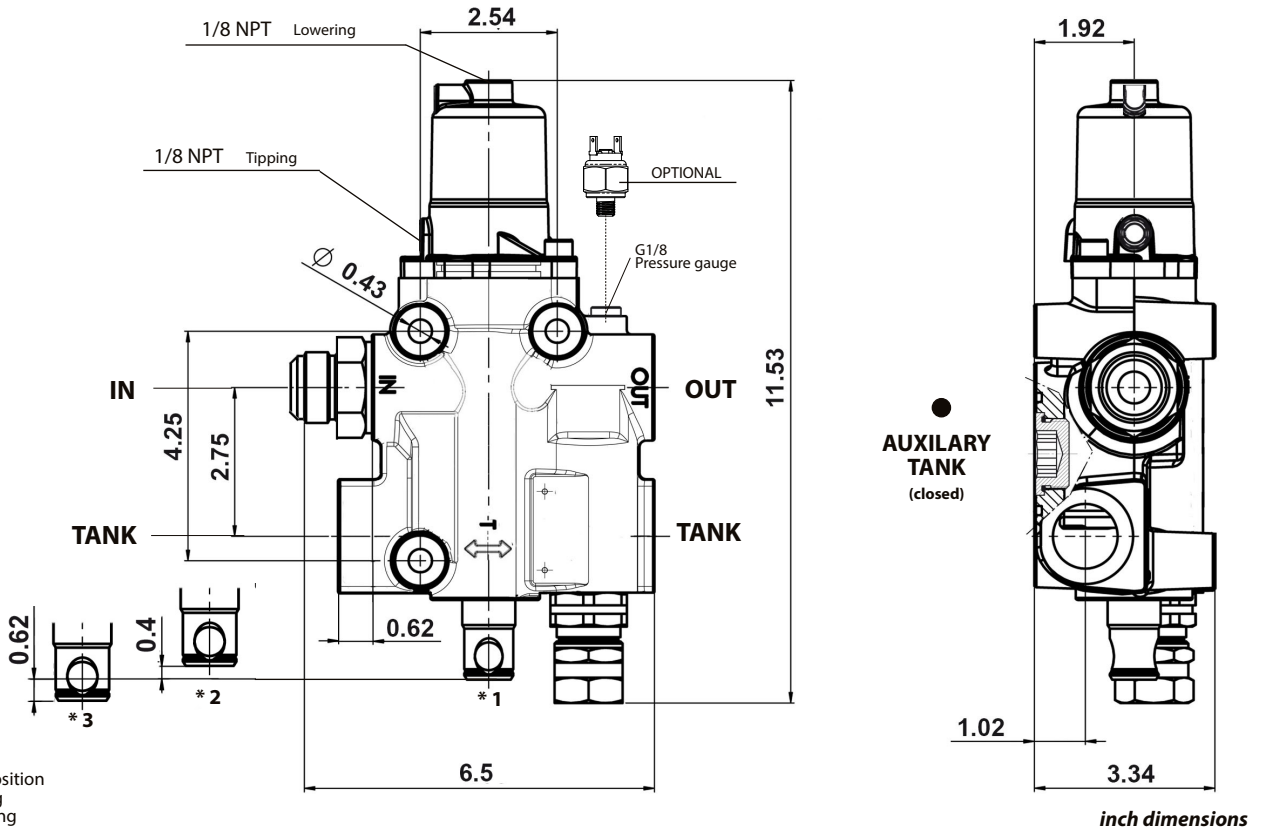


Pneumatically operated hydraulic tipping valve especially designed for tippers on semitrailers connected to tractor trucks. The ports position as well as double side oil return option included allow quick and effective pipes connection resulting in time and fittings saving. The valve also includes an auxiliary outlet (●) available on the mounting face, which is usually plugged. When it is fitted onto a tank, it is then possible to allow direct oil return into the tank. The valve layout is open centre according to the EC directive and includes a check valve on the pump input port as well as built-in adjustable relief valve direct type.

If used in combination with proportional air control valve (like our N-Force series) you can adjust the lowering speed of the tipper body.

- Casing made out of nodular cast iron with white zinc coating
- Predisposition for pressure signal switch / gauge port.
- Temperature range: -15+110°C, recommended viscosity range 12-100 cSt, recommended filtration grade 25 micron.
- Mounting dimensions fully interchangeable with Modular 250 valves.

Dimensions

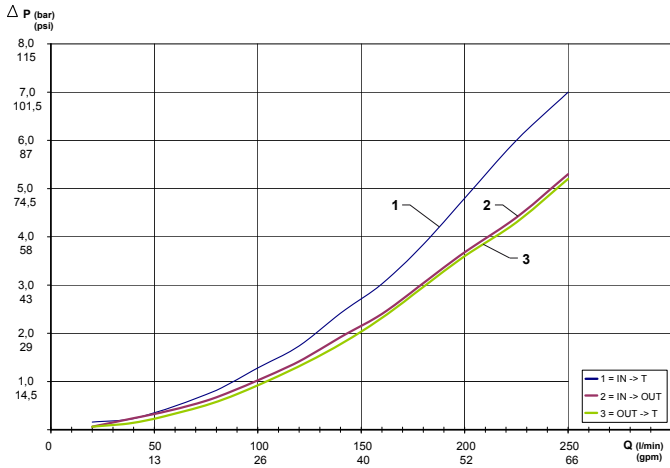


* 1 - Rest position
* 2 - Tipping
* 3 - Lowering

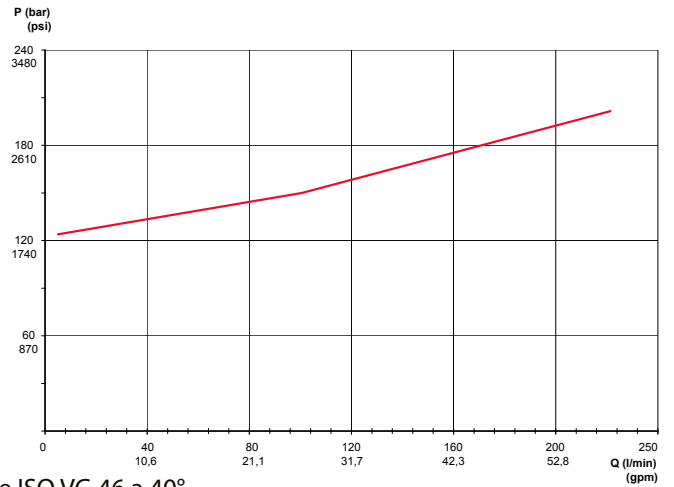
Technical features

Tipping valve type	Order code	IN	TANK	OUT	Pressure values		Flow	Weight
		ISO 228	ISO 228	ISO 228	Standard	Max.		
MODULTRUCK 250 CE	12191800264	1 5/16-12 UN-2A	1 5/16-12 UN-2B		2320 psi	4061 psi	66 gpm	17,4 lb

Tipping valve pressure drops

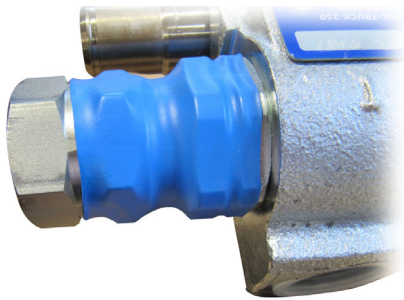


p-Q operating curve for pressure relief valves



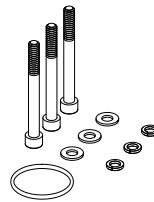
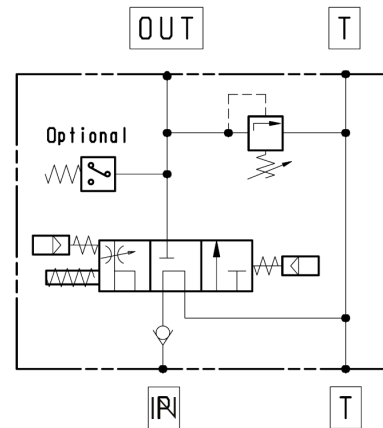
The graph refers to oil type ISO VG 46 a 40°

OPTIONAL
Safety sealing
12190100110



Must be ordered separately

Functional diagram



Mounting kit p/n: 12199400888	
Q.	Description
3	Screw M10 TCE L=95
3	Washer M10
3	Spring washet M10
1	O-ring 155

Seal kit: 12190002002