

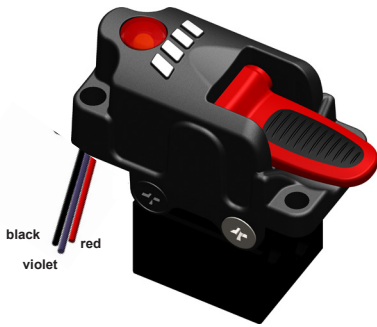
ISTRUZIONI DI MONTAGGIO MOUNTING INSTRUCTIONS

CODICE
CODE

10000100462



COLLEGAMENTI ELETTRICI / ELECTRICAL CONNECTIONS



Collegare il led ad una alimentazione di massimo 24V. Assorbimento del LED interno 20mA. Il cavo rosso deve essere collegato al positivo mentre il nero con il negativo. E' possibile collegare dei carichi ausiliari utilizzando il cavo viola come da schema allegato.

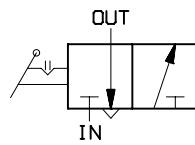
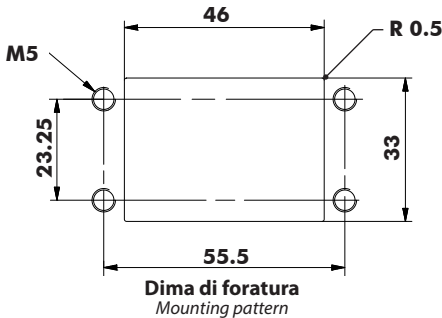
Carico max: 12V 2A
24V 1A

Se il cavo viola non viene utilizzato è necessario isolarlo.

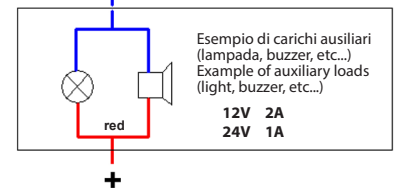
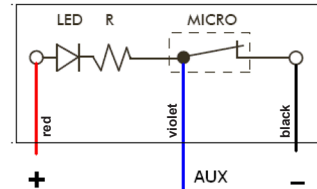
Connect the lamp to the feeding (max. 24V). LED absorption 20mA. Fasten the red wire to the positive pole and the black wire to the negative one. It is possible to connect auxiliary loads using the violet cable as per enclosed diagram.

Max load: 12V 2A
24V 1A

If you don't use the violet cable you need to isolate it.



Schema di funzionamento
Functional diagram



16/03/2022

99710000285 Rev: AA

pag.1

O.M.F.B. S.p.A. Hydraulic Components

We reserve the right to make any changes without notice.

Edition 2011.10 No reproduction, however partial, is permitted.

Via Cave, 7/9 25050 Provaglio d'Iseo (Brescia) Italy Tel.: +39.030.9830611

Fax: +39.030.9839207-208 Internet:www.omfb.it e-mail:contatti@omfb.it

HYDRAULIC COMPONENTS

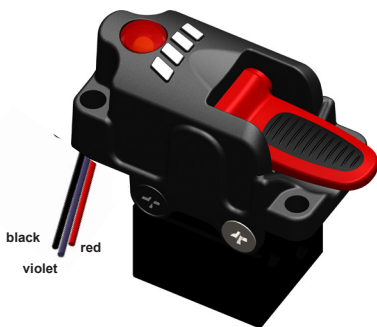
ISTRUZIONI DI MONTAGGIO MOUNTING INSTRUCTIONS

CODICE
CODE

10000100462



COLLEGAMENTI ELETTRICI / ELECTRICAL CONNECTIONS



Collegare il led ad una alimentazione di massimo 24V. Assorbimento del LED interno 20mA. Il cavo rosso deve essere collegato al positivo mentre il nero con il negativo. E' possibile collegare dei carichi ausiliari utilizzando il cavo viola come da schema allegato.

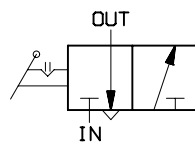
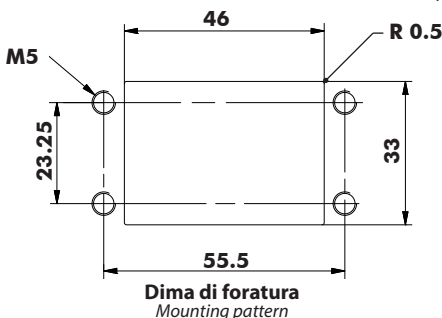
Carico max: 12V 2A
24V 1A

Se il cavo viola non viene utilizzato è necessario isolarlo.

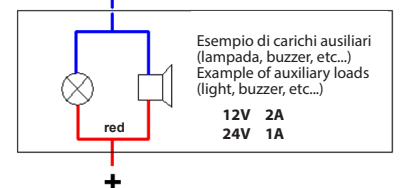
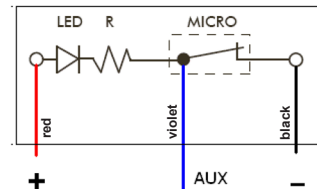
Connect the lamp to the feeding (max. 24V). LED absorption 20mA. Fasten the red wire to the positive pole and the black wire to the negative one. It is possible to connect auxiliary loads using the violet cable as per enclosed diagram.

Max load: 12V 2A
24V 1A

If you don't use the violet cable you need to isolate it.



Schema di funzionamento
Functional diagram



16/03/2022

99710000285 Rev: AA

pag.1

O.M.F.B. S.p.A. Hydraulic Components

We reserve the right to make any changes without notice.

Edition 2011.10 No reproduction, however partial, is permitted.

Via Cave, 7/9 25050 Provaglio d'Iseo (Brescia) Italy Tel.: +39.030.9830611

Fax: +39.030.9839207-208 Internet:www.omfb.it e-mail:contatti@omfb.it

HYDRAULIC COMPONENTS