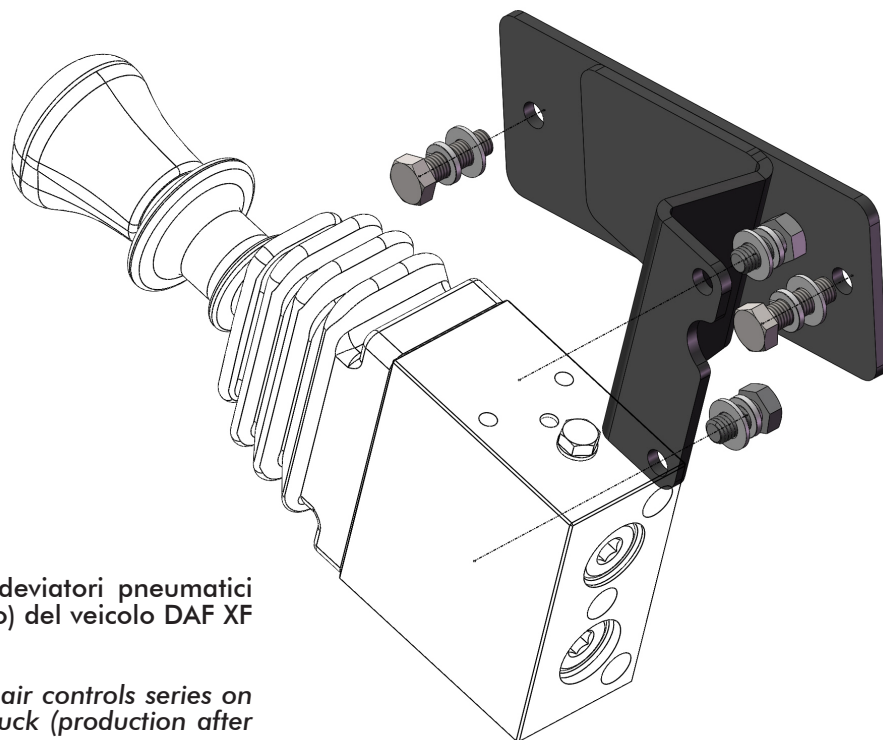


**STAFFA SUPPORTO DEVIATORI
COMPONIBILI PER DAF XF (2012)**

**BRACKET KIT FOR SANDWICH
CONTROL SWITCH - DAF XF (2012)**

CODICE ORDINAZIONE
ORDER CODE

10000240025

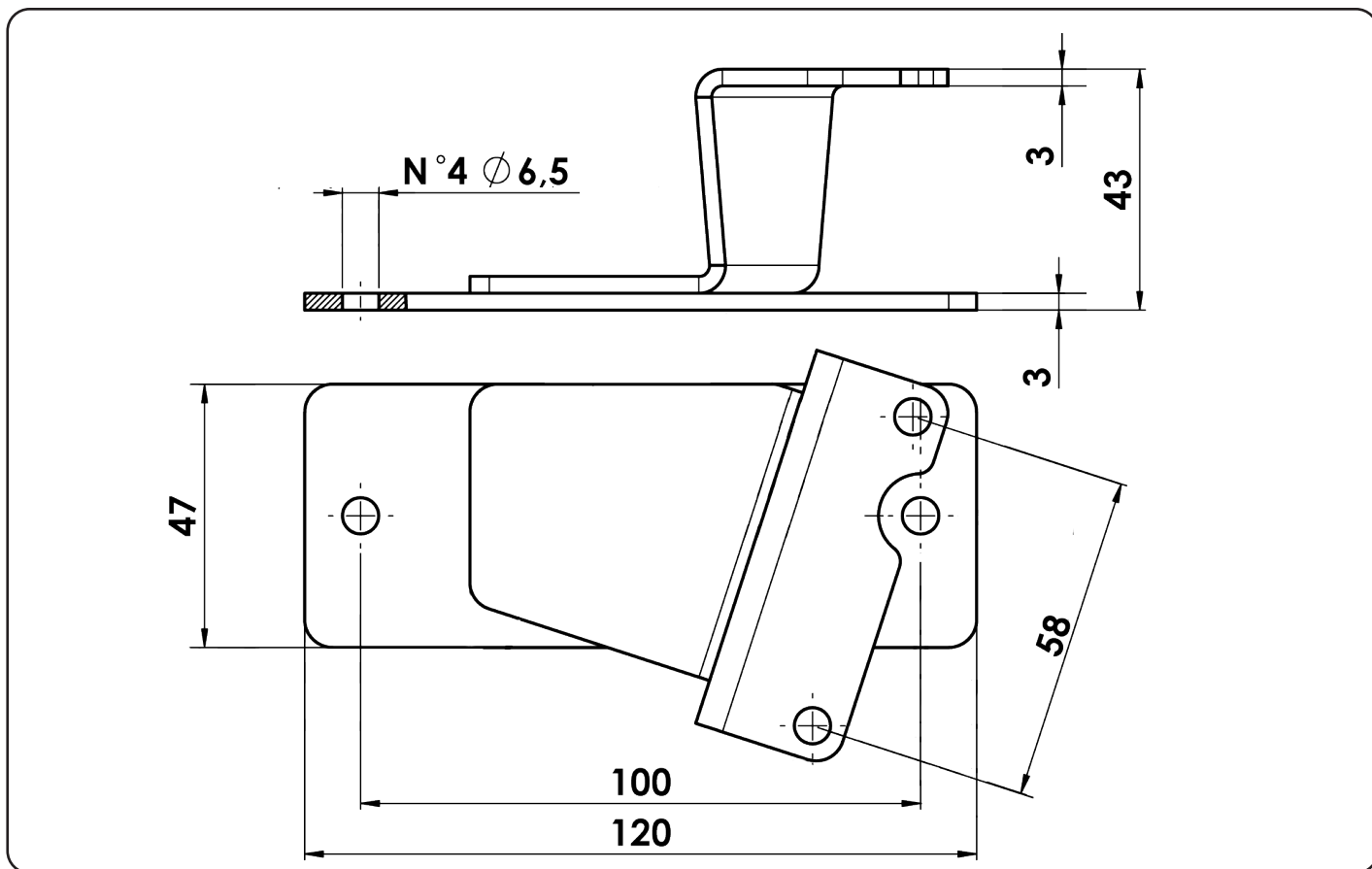


Kit appositamente studiato per fissare i deviatori pneumatici componibili sul supporto sedile (nuovo tipo) del veicolo DAF XF (indicativamente dopo 06/2012).

Assembly kit especially designed to mount air controls series on the new bracket driver's seat of DAF XF truck (production after 06/2012 approx.)

Data: Martedì 15 ottobre 2013

Codice foglio: 99710000225 Rev: //



pag.1

O.M.F.B. S.p.A. Hydraulic Components

We reserve the right to make any changes without notice.

Edition 2013.10 No reproduction, however partial, is permitted.

Via Cave, 7/9 25050 Provaglio d'Iseo (Brescia) Italy Tel.: +39.030.9830611

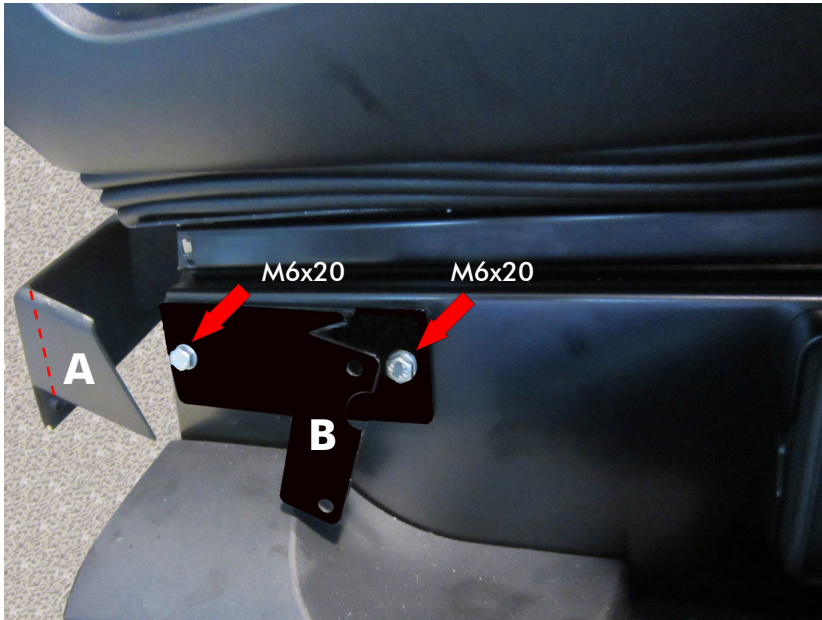
Fax: +39.030.9839207-208 Internet: www.omfb.it e-mail: info@omfb.it

**COMPANY WITH
QUALITY SYSTEM
CERTIFIED BY DNV GL**
= ISO 9001:2015 =

OMFB

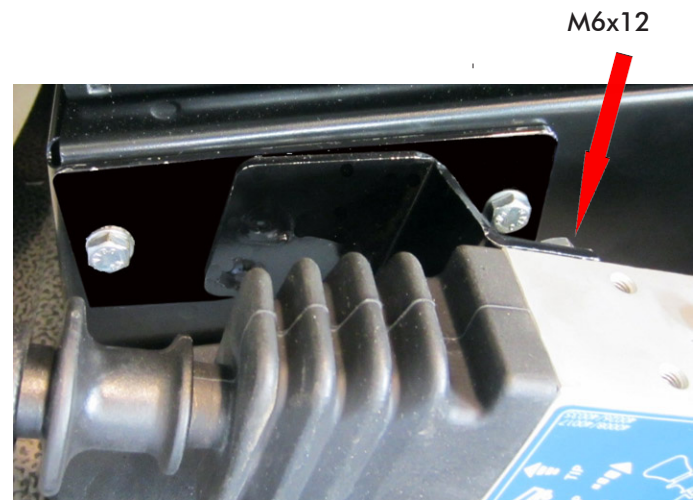
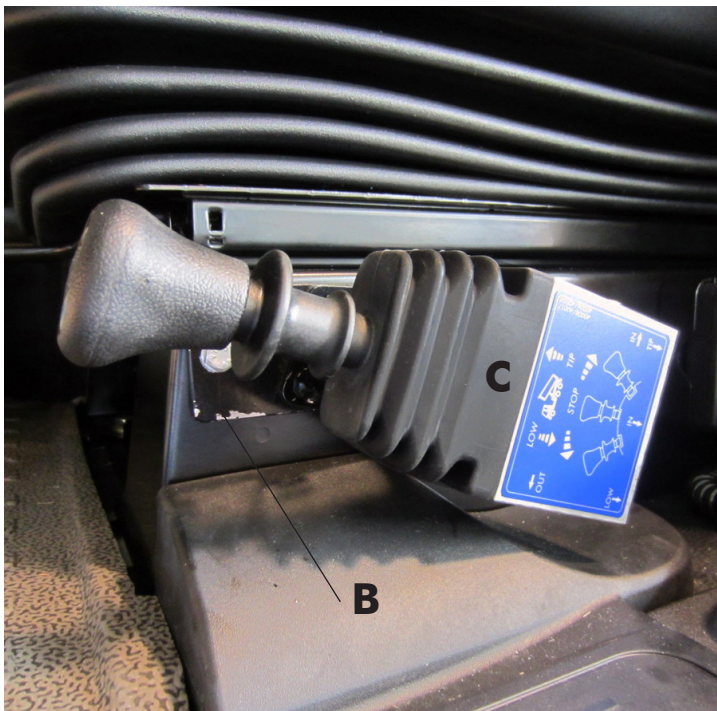
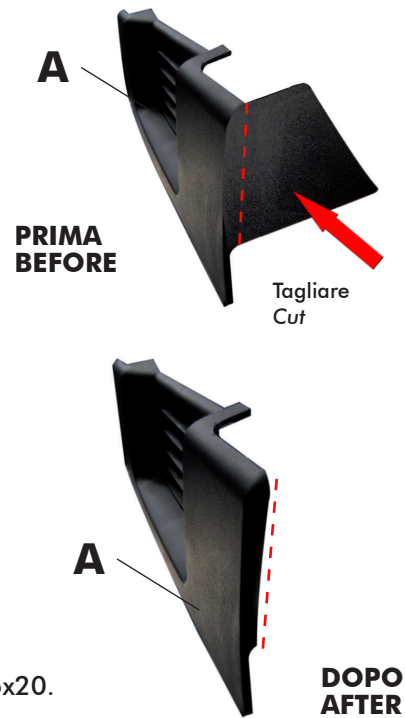
HYDRAULIC COMPONENTS

ISTRUZIONI DI MONTAGGIO / MOUNTING INSTRUCTIONS



- 1 - Rimuovere il particolare **A** e tagliare la plastica come indicato in figura.
Nei 2 fori filettati M6 presenti nel sedile, fissare la piastra **B** con viti M6x20.

- 1 - Remove the part **A** and cut the plastic part as shown in the picture. Insert the bracket **B** into the two threaded holes M6 with screws M6x20.



- 2 - Collegare i tubi dell'aria al deviatore pneumatico **C** e fissarlo al supporto **B** con le 2 viti M6x12.
2 - Connect the air pipe into the air control **C** and fix it on the bracket **B** by using the 2 screws M6x12.



ATTENZIONE: tutte le operazioni relative al montaggio, devono essere eseguite **IN SICUREZZA** secondo le norme vigenti.
ATTENTION: all the operations related to the assembling of these components have to be carried out in respect of the current **SAFETY** regulations in place