

ALBERO DI CORREDO QUILL SHAFT "VT2014...VTO2814 B + RETARDER"

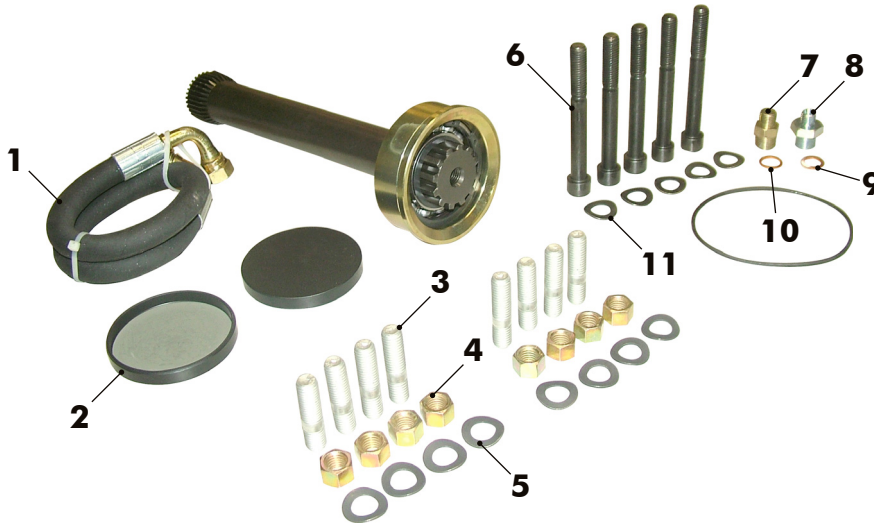
**CODICE
CODE**

09302600040

VOLVO

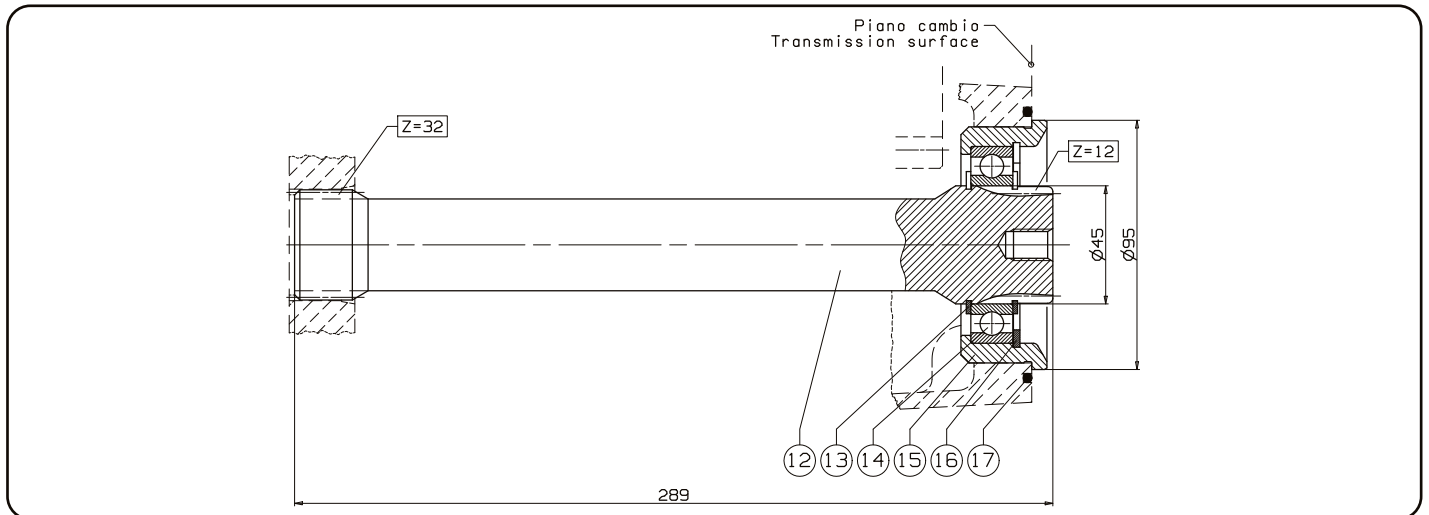
02/03/2021

99740009310



Kit albero adatto solo per PTO tipo "MULTI-POWER" cod. 02601003171. In fase di montaggio sul cambio, si raccomanda di rispettare le istruzioni allegate. cod. istruzione 99700102610.

Shaft kit only suitable for "MULTI-POWER" PTO cod. 02601003171. In the mounting phase onto the gearbox, the attached instructions must be respected. In-struction code 99700102610.



N°	Codice Code	Descrizione Description	Q.
1	15699000932	Tubo / Oil Tube 10x21	1
2	50602608010	Coperchio / Cover	2
3	50300500160	Prigioniero / Stud M12x32	8
4	50500000250	Dado / Nut M12 CH17 H12	8
5	50102000129	Rosetta elastica / Washer	8
6	50200501054	Vite / Screws TCE M12x105	5
7	11600600259	Nipplo doppio / Nipples 1/4" x 3/8"	1
8	11600600302	Nipplo doppio / Nipples M12x1,5x3/8"	1
9	11600901077	Rondella rame / Copper washers	1
10	11600901111	Rondella rame / Copper washers	1
11	50102000129	Rosetta elastica ondulata / Washer	5
12	52100001095	Albero di corredo / Quill shaft	1
13	50100200425	Anello seeger / Circlip E 45	2
14	51000145755	Cuscinetto a sfere / Ball bearing 45x75x16	1
15	53400200533	Anello centraggio PTO / Centering ring - PTO	1
16	50100100695	Anello seeger / Circlip I 75	1
17	50601998037	Guarnizione / Gasket	1

16/06/2010

99709326040 Rev: //

pag.45

OMFB
HYDRAULIC COMPONENTS

O.M.F.B. S.p.A. Hydraulic Components
We reserve the right to make any changes without notice.
Edition 2007.12 No reproduction, however partial, is permitted.
Via Cave, 7/9 25050 Provaglio d'Iseo (Brescia) Italy Tel.: +39.030.9830611
Fax: +39.030.9839207-208 Internet: www.omfb.it e-mail: contatti@omfb.it

COMPANY WITH
QUALITY SYSTEM
CERTIFIED BY DNV GL
= ISO 9001:2015 =